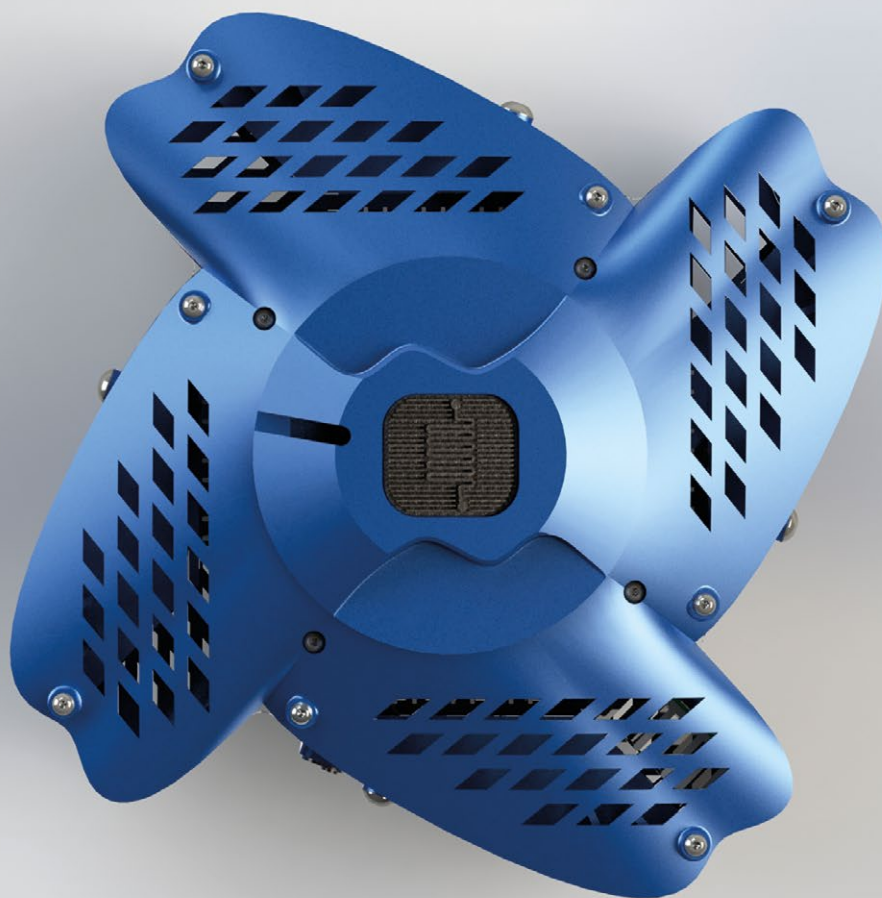




## Batch and flow in one reactor with several wavelengths



- Batch, flow, stop-flow and CSTR reactions
- 7+1 wavelengths in one instrument
- Available in kit form or ready-to-use



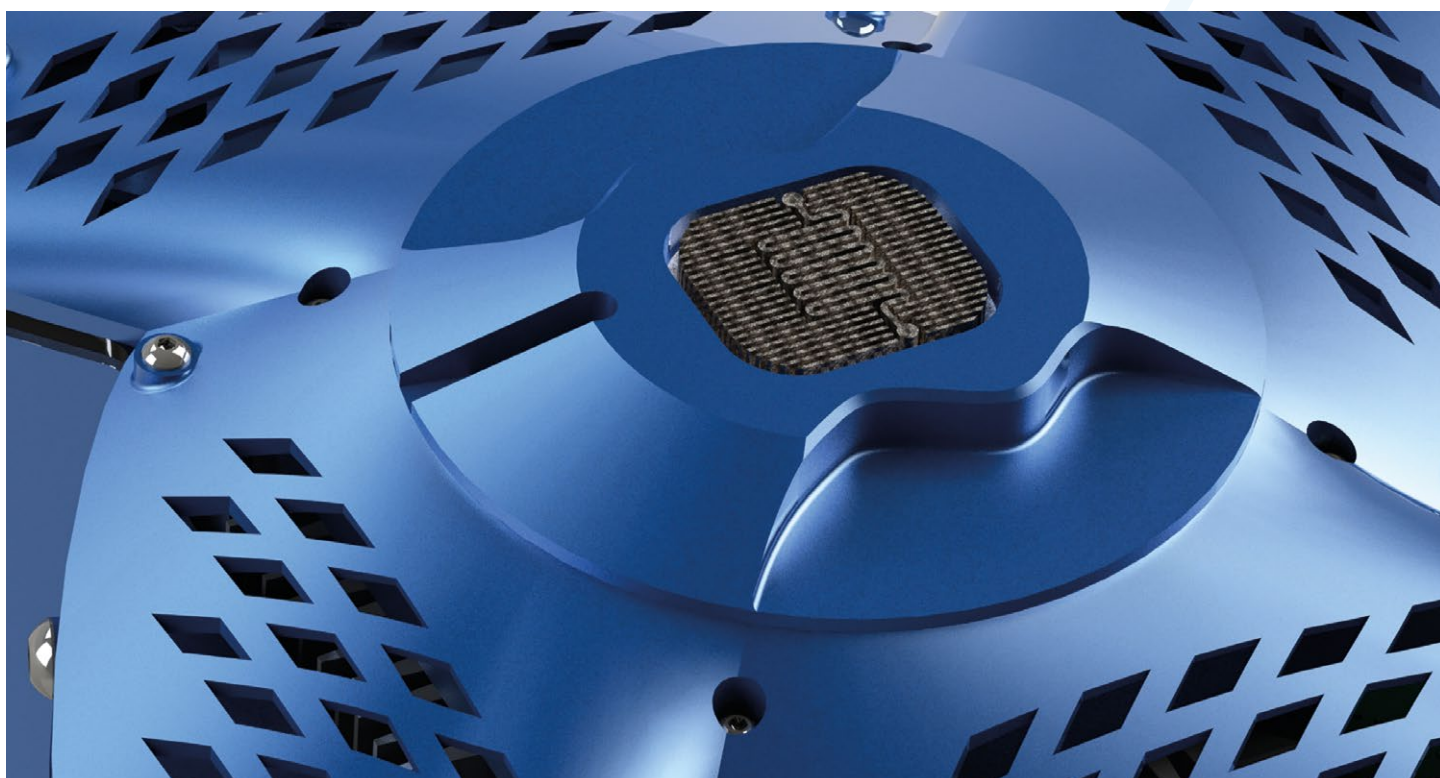
## ABOUT THE REACTOR

The PhotoCube™ Pro is the first multi-wavelength instrument available for advanced photochemical applications. Several system configurations are available enabling the complete customization for specific needs, from 3D printable kits to complete ready-made reactors.

This reactor enables the implementation of multi-wavelength batch and continuous flow photochemical reactions. The multi-color option ranges from UVA to red. With the opportunity to select the color of the LEDs, the system can be fine-tuned for specific wavelengths and applications, furthermore, multiple wavelengths can be utilized at the same time.

## FEATURES

<b>Available wavelengths:</b>	365, 395, 457, 500, 523, 595, 623 nm and white
<b>Available batch reactor volumes:</b>	4 mL and 20 mL glass vials
<b>Available loop volumes:</b>	2-15 mL
<b>Available loop materials:</b>	FEP or PFA
<b>Temperature range:</b>	-20 to 100 °C
<b>LED input power:</b>	up to 128 W/color
<b>Maximum LED input power:</b>	300 W



For more information, please visit  
[www.thalesnano.com](http://www.thalesnano.com)  
LinkedIn: /company/thalesnano-inc-  
Twitter: /thales\_nano  
Instagram: /thalesnano\_inc/  
Facebook: /ThalesNano/

ThalesNano Inc.  
Zahony u. 7.  
H-1031 Budapest  
Hungary  
Tel.: +36 1 880 8500  
Fax: +36 1 880 8501  
E-mail: [sales@thalesnano.com](mailto:sales@thalesnano.com)

US Office  
50 S. Penn St. Suite B-2  
Hatboro  
PA. 19040  
USA  
Phone: 215-534-3365  
E-mail: [USAsales@thalesnano.com](mailto:USAsales@thalesnano.com)